

THERMOFIT • SPECIFICATION CONTROL DRAWING • MOLDED PARTS

NOTES

- All dimensions are in inches.
- Dimensions appearing in table are as follows:
a - AS SUPPLIED b - AFTER UNRESTRICTED RECOVERY
- The following coatings are optional:
S-1017 (I/42) adhesive and
S-1048 (I/86) adhesive
for -3 or -4 material only
Dimensions appearing in table are for uncoated parts. When coating is added entry diameters will be reduced .06 max.
- Molding ports are optional. When -00 modification number is specified they will be located as shown.
- Weight shown in table of dimensions is based on polyolefin part.

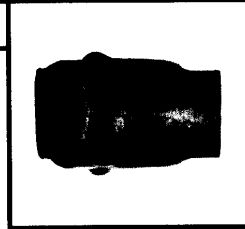
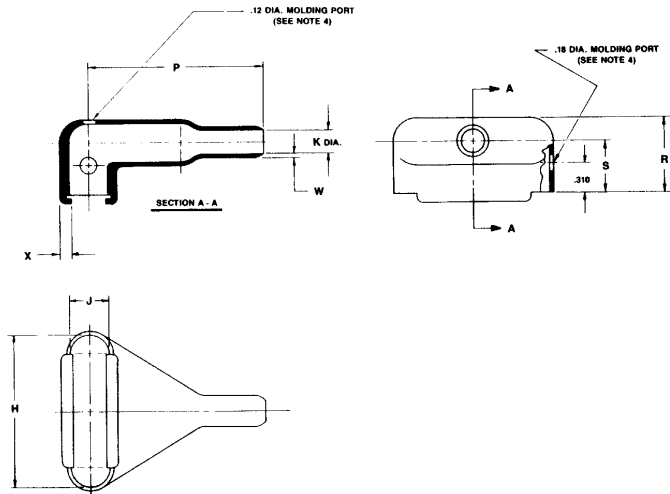
ORDERING INFORMATION

Matl. No.	Description	Raychem RT Spec
-3	Polyolefin, Semi-Rigid	RT-301
-4	Polyolefin, Flexible	RT-1304
-8	Polyolefin, Space	RT-1308
-25	Elastomer, Semi-Rigid	RT-1325

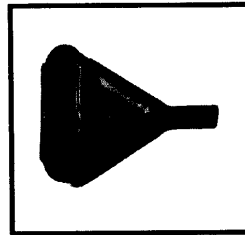
Add material dash number as suffix to part number;
Example 1 - Order 234A711-3 when polyolefin, semi-rigid is required.

Add coating slash number as suffix to material dash number when coating is required.
Example 2 - Order 234A752-XI/42 when S-1017 adhesive is required.

Example 3 - Order 234A732-3-00 when molding ports are required.



AS SUPPLIED



AFTER UNRESTRICTED RECOVERY

If this document is printed it becomes uncontrolled.
Check for the latest revision.

TABLE OF DIMENSIONS

PART NUMBER	H		J		K		P	R	S	W	X	Weight lbs ±10%	This Boot Fits Cannon
	Min a	±5% b	Min a	±5% b	Min a	Max b	±10% b	±10% b	±10% b	±20% b	±20% b		
234A711	.63	.80	.63	.42	.63	.16	1.10	.73	.50	.04	.12	.0059	DE-9
234A721	.75	1.11	.75	.42	.75	.21	1.38	.74	.50	.04	.12	.0086	DA-15
234A732	1.15	1.66	1.15	.42	1.15	.25	1.87	.79	.56	.04	.12	.0143	DB-25
234A742	1.35	2.31	1.35	.42	1.35	.31	2.35	.79	.56	.04	.12	.0220	DC-37
234A752	1.48	2.28	1.48	.54	1.48	.36	2.49	1.04	.69	.04	.12	.0260	DD-50

Raychem

Raychem Corporation
300 Constitution Drive
Menlo Park, CA 94025-1164
415) 361 6055

E.O.	REV	DATE	DESCRIPTION

DRN	JC
CHK'D	JSC
AUTH	RKG
AUTH	DDR

PART DESCRIPTION
BOOT, RECTANGULAR,
SUBMINIATURE, 90°, SIDE ENTRY,
OVEREXPANDED

PART NO.	REV LTR
234A711 thru 752	F
DATE:	September 3, 1987